

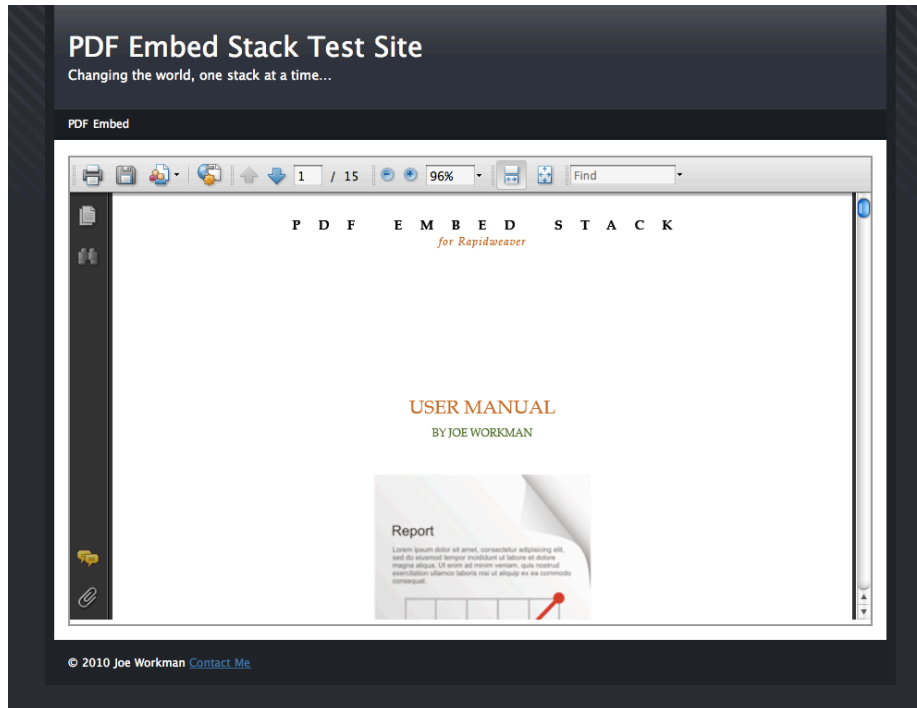
USER MANUAL

BY JOE WORKMAN



Overview	1
Usage & Settings	2
Appendix	4
Version History	7

Overview



The PDF Embed Stack does exactly what you think it does. It embeds PDF files onto your webpage. In order for this to work, you need to either have a browser with HTML5 support or you need to have a PDF plugin installed in your browser.

PDF Embed Product Page: <http://joeworkman.net/products/pdf>

PDF Embed Test Site: <http://pdf.joeworkman.net>

PDF Embed Support: <http://joeworkman.net/support>

Usage & Settings

Installation

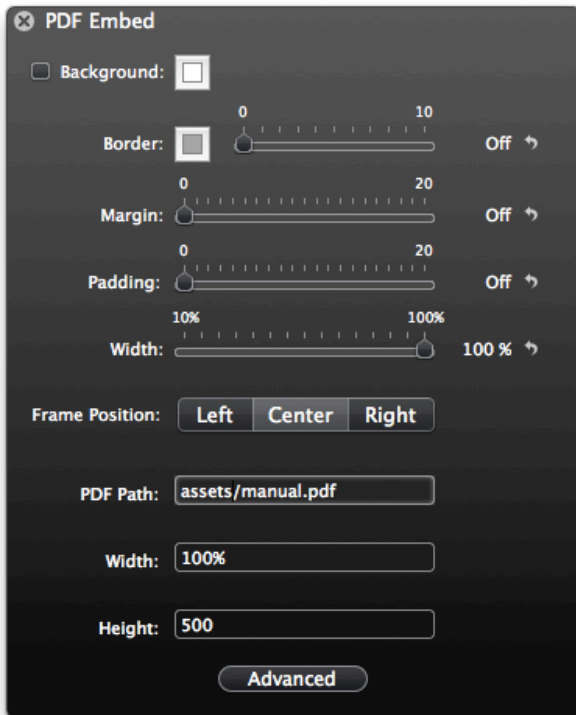
Installing the Lightbox Stacks is simple. Just use the Stacks Installer.app to install the stacks.

The disk image also contains this user manual as well as a sample Rapidweaver site. This is the same RW file that is used to create <http://pdf.joeworkman.net>

Basic Setup

1. Drag the PDF Embed Stack onto your page.
2. The the pdf to be used needs to be added to the Page Assets and set the path to your pdf within the **PDF Path** setting. Please refer to the [Adding Page Assets](#) section in the Appendix.
3. You can now setup your desired height and width settings for the PDF. You can use both percentages or a plain number to defined exact pixel width.
4. Now preview and enjoy!

Stack Settings



The image shows a settings panel titled "PDF Embed" with a close button (X) in the top left. The panel contains several configuration options:

- Background:** A checkbox that is currently unchecked.
- Border:** A color selection box (grey) and a slider ranging from 0 to 10. To the right of the slider is a toggle switch labeled "Off" with a right-pointing arrow.
- Margin:** A slider ranging from 0 to 20. To the right is a toggle switch labeled "Off" with a right-pointing arrow.
- Padding:** A slider ranging from 0 to 20. To the right is a toggle switch labeled "Off" with a right-pointing arrow.
- Width:** A slider ranging from 10% to 100%. The current value is set to 100%. To the right is a toggle switch labeled "100 %" with a right-pointing arrow.
- Frame Position:** Three buttons labeled "Left", "Center", and "Right". The "Center" button is currently selected.
- PDF Path:** A text input field containing the value "assets/manual.pdf".
- Width:** A text input field containing the value "100%".
- Height:** A text input field containing the value "500".
- Advanced:** A button located at the bottom of the panel.

PDF Path: This is the path to the pdf that you want to use. Please refer to the [Adding Page Assets](#) section in the Appendix for additional info.

Height: The height of the pdf container.

Width: The width of the pdf container.

Appendix

Adding Page Assets

There are two primary ways to accomplish adding files to your page assets: manually uploading to the server and utilizing the page assets feature in Rapidweaver. While the below instructions refers to using image files, the exact same same steps need to be followed for pdf files as well.

Manually Uploading to Server

You can manually upload the files to your web server via your favorite FTP program. Then you can configure the file path to the location that the files were copied to.

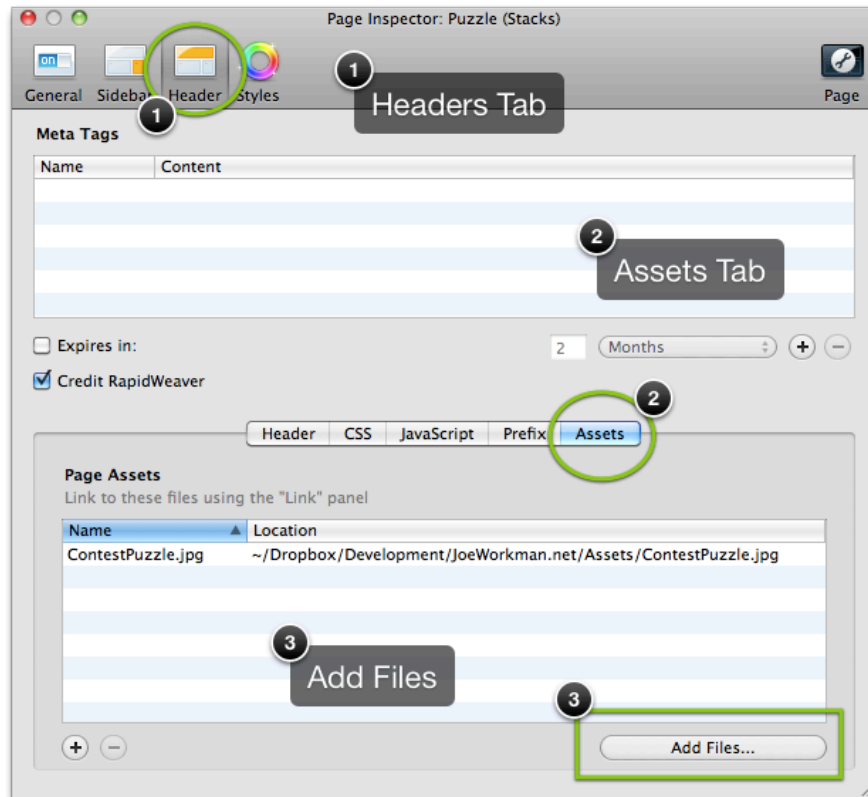
1. I upload a file called *my_image.jpg* to my webserver in the folder called *assets*.
2. I can verify my path by going to http://joeworkman.net/assets/my_image.jpg.
3. Once I have verified the image is in the location, I can configure my Image Path to be */assets/my_image.jpg*.

Using Page Assets

The other alternative is to utilize the Page Assets feature of Rapidweaver.

1. To access the Page Assets in Rapidweaver, you will need to open up your **Page Info/ Page Inspector** window and go to the **Header** tab.
2. Then you will need to go to the **Assets Tab**.

3. Click on the Add Files button and navigate to the image file you want to add.

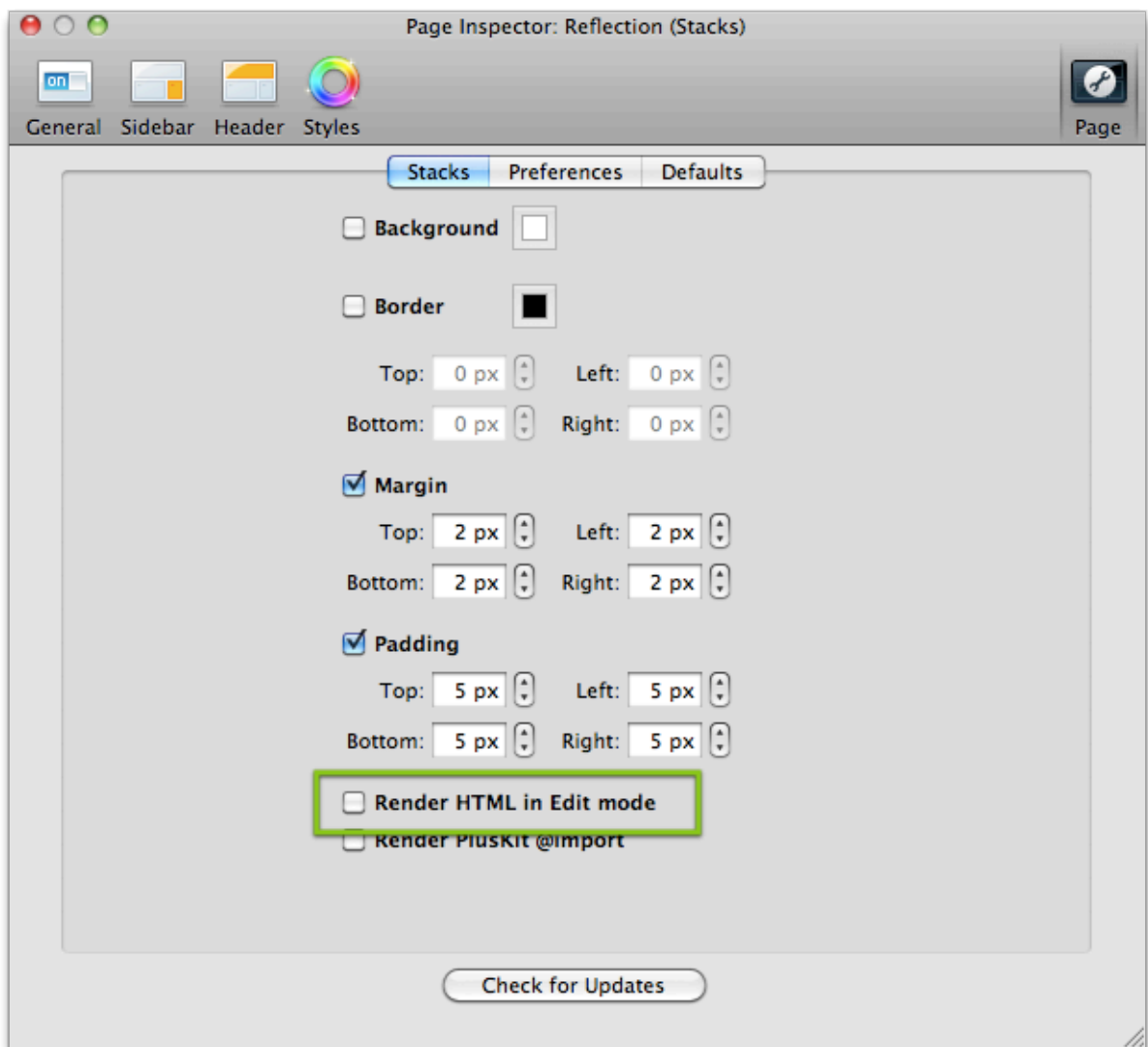


4. Now the tricky part of figuring out the path to your image file.
 - a. If your Rapidweaver page is the only page that is contained within its folder, than the path to your image will be *“assets/my_image.jpg”*.
 - b. If your Rapidweaver page (for this example: index.html) is **NOT** the only page that is contained within its folder, than the path to your image will be *“index_assets/my_image.jpg”* (%page_name%_assets/%image_name%).

Turn Off “Render HTML in Edit Mode”

Follow the below steps to turn off the Render HTML in Edit Mode.

1. Open the Stack Setting HUD window that you want to turn off “Render HTML in Edit Mode.”
2. Click on the Advanced button at the bottom of the settings HUD.
3. This will open up the Page Inspector for the Stacks Page. You will find the checkbox for “Render HTML in Edit Mode.” Uncheck it..



Version History

Version 1.0 -- 2/8/2010

1. Initial Version.